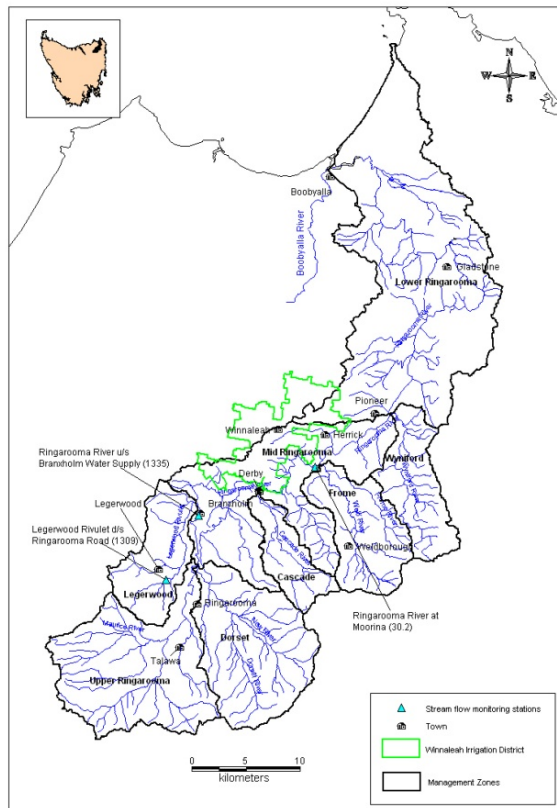


RINGAROOMA WATER MANAGEMENT PLAN: FACT SHEET #1

WHAT IS THE RINGAROOMA WATER MANAGEMENT PLAN?



Photo of the Ringarooma River at Branhholm



Map of Ringarooma River catchment water management plan area

Introduction

The Department of Primary Industries, Parks, Water and Environment is working with a Consultative Group to develop a plan to allocate and manage water resources in the Ringarooma River catchment. The Plan, known as a Water Management Plan (WMP), aims to identify how much water can be reliably allocated within the catchment and to balance the sharing of these water resources between all users.

This Fact Sheet gives a brief overview of water management issues and the plan development process.

Purpose of a Water Management Plan

The Plan is a statutory document that specifies management rules for the sharing of water resources that are environmentally sustainable and provide equitable access for water users.

The Plan is an opportunity to improve current management, particularly:

- Ensure there is adequate provision for the environment;
- Clarify rights to water to support economic development; and
- Review existing access rules to ensure equitable access to available water.

The Plan will determine how much water can be taken from the Ringarooma River catchment and the rules which will be applied to maximise the likelihood the environment and other water users will receive the water to which they are entitled.

Who will be affected and when?

The Plan primarily affects licensed water users. The Plan will have rules that determine when and how much water licensed users may extract. It is expected that a draft Plan will be released for public consultation in mid 2011, and that the final Ringarooma Water Management Plan should be ready for adoption (and then implementation) by the Minister for Primary Industries and Water in early 2012.

What will the Plan include?

For the Ringarooma catchment, as with other Plans, rules will be considered to provide for environmental, social and economic objectives. The Plan will identify the limits to the amount of water that can be allocated from the Ringarooma River, including Upper Ringarooma River, Dorset River, Cascade River, Mid Ringarooma River, Legerwood Rivulet, Frome River, Wyniford River and Lower Ringarooma River subcatchments and their

tributaries. It will also identify the rules which will allow users to make best use of the available water in an equitable way. The Plan will seek the best balance possible to deliver sustainable environmental, social and economic outcomes.

How will the Plan be developed?

The Department of Primary Industries, Parks, Water and Environment is responsible for developing the Plan. It will do this as required in the *Water Management Act 1999*, and to meet national requirements.

Through all stages of the planning process, the Department is working in consultation with the Ringarooma Water Management Plan Consultative Group, whose members represent key stakeholders and their interests.

A public meeting will be held to explain the Draft Plan and the process for making submissions.

The Department will invite written submissions when the Draft Water Management Plan is released for public consultation. The Secretary of the Department will then submit a report on the submissions to the Tasmanian Planning Commission, which will then independently review the submissions and make recommendations on possible changes to the Draft Water Management Plan.

Consultative Group members

John Beswick (Dorset Council)
Andrew Braithwaite (Inland Fisheries Advisory Council)
Jeremy Carins (Tasmanian Agricultural Productivity Group).
Alan Davenport (Winnaleah Irrigation Scheme)
Paul Ellery (Tasmanian Irrigation Development Board).
Aidan Flanagan (Forest and Forestry Industry Council)
Peter Heyes (Tasmanian Poppy Growers Association)
Kennedy Kurwaisimba (Forestry Tasmania)
Andrew Lester (Tasmanian Farmers and Graziers Association – TFGA)
Mike Stevens (Anglers Alliance Tasmania)
Brendon Thompson (TFGA)
Andrew Truscott (Ben Lomond Water)
John Williams (TFGA)
Jay Wilson (NRM North)
Observer: Sarah Gatenby (TFGA)

Communication

During Plan development the Department will inform you about issues being considered through:

- The Department's website
- fact sheets, newsletters, media articles, leaflets and use of industry based newsletters; and
- public information sessions

Consultation

The Draft Water Management Plan will be subject to a public consultation process that will give the community the opportunity to comment and make a submission on the Draft Plan. The Draft Plan is expected to be released for public comment in mid 2011.

For further information

Refer to the Department's website on:

<http://www.dpipwe.tas.gov.au> and follow the links through Water, Water Management Plans, Draft Water Management Plans to Ringarooma Water Management Plan.

If you have any queries, please contact:

Nerida Bleakley

Project Manager, Ringarooma Water Management Plan
Department of Primary Industries, Parks, Water & Environment
GPO Box 44
HOBART TAS 7001
Telephone: 03 6233 3645
Email: Nerida.Bleakley@dpiwpe.tas.gov.au