

**Extension Accelerator** is a pilot development program for agricultural extension professionals in partnership with their employers.

The program will run for 18 months from March 2020 to September 2021.

**APPLY NOW** if you:

- are the employer of a graduate (employed for less than 2 years) working in a role involving agricultural extension in Tasmania
- and your employee want to benefit from a Government-funded pilot program to fast-track the professional development of your employee and add value to your business
- want to further develop your reputation as an employer of choice

To promote the success of the pilot, *Extension Accelerator* has participation requirements that apply to participants and their employers. For details of eligibility criteria and participation requirements of the program, visit [www.dpipwe.tas.gov.au/extension](http://www.dpipwe.tas.gov.au/extension).

EXTENSION ACCELERATOR is an exciting initiative to develop young Tasmanian agricultural professionals and build extension capability within the sector in partnership with industry.

**APPLY NOW**

at

[www.dpipwe.tas.gov.au/extension](http://www.dpipwe.tas.gov.au/extension)

**Applications close 4 March 2020**

For more information or to submit an application, contact:

Extension Accelerator Steering Committee  
AgriGrowth Tasmania  
Department of Primary Industries, Parks, Water and Environment

GPO Box 44 HOBART TAS 7001

P: 1300 292 292

E: [FarmPoint@dpipwe.tas.gov.au](mailto:FarmPoint@dpipwe.tas.gov.au)

Visit: [www.dpipwe.tas.gov.au/extension](http://www.dpipwe.tas.gov.au/extension)

# Extension Accelerator

A PARTNERSHIP PROGRAM FOR THE DEVELOPMENT OF EARLY CAREER AGRICULTURAL EXTENSION PROFESSIONALS

## EXTENSION ACCELERATOR

is hosted by the Tasmanian Institute of Agriculture.

ENGAGE

in face-to-face training workshops and extension case studies for up to 3 days each quarter

APPLY

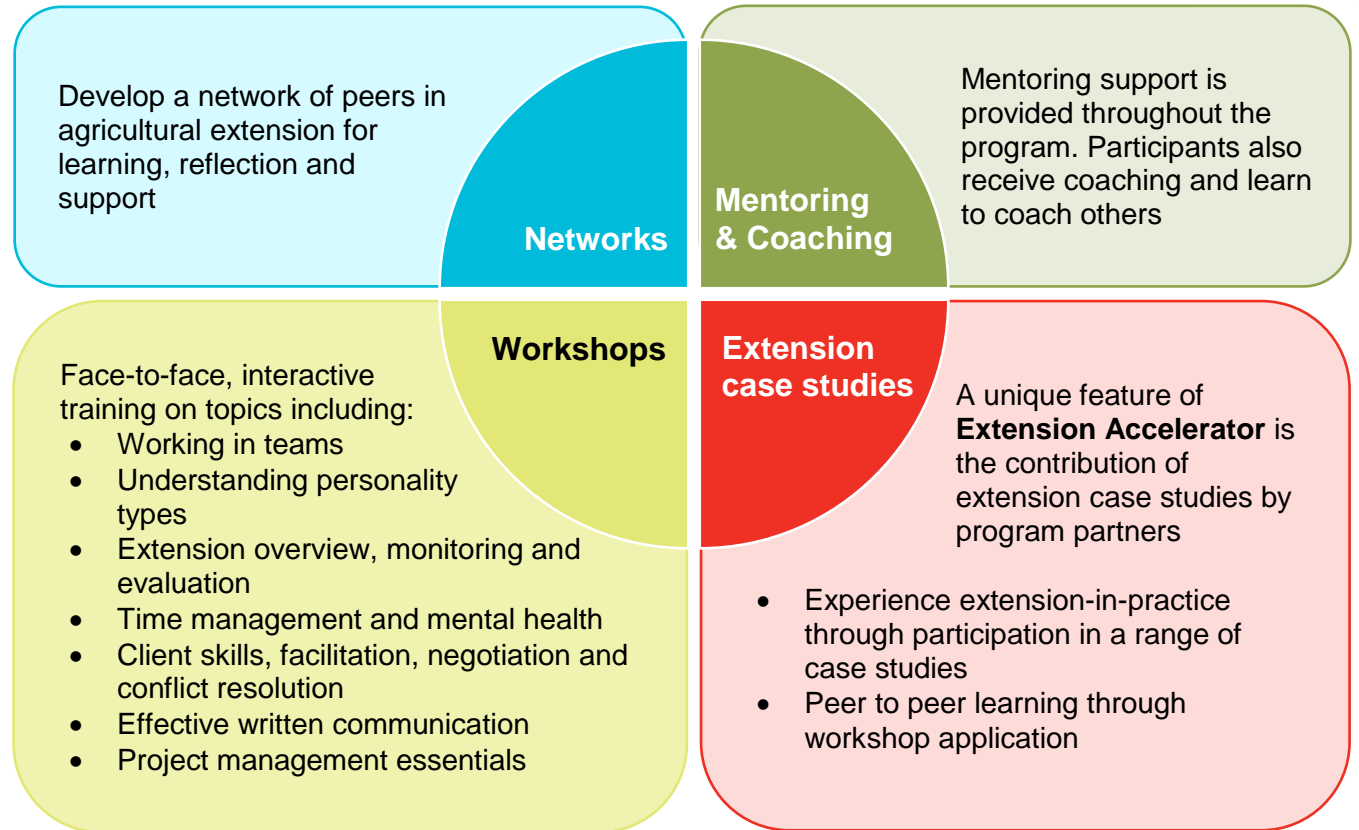
learnings in the workplace and everyday life

REFLECT

on learning and application through video hook-ups between face-to-face sessions

GROW

professionally and personally through developmental relationships with peers and mentors



## PROGRAM COORDINATOR

Dr Alison Hall - TIA

Alison has extensive experience in dairy extension. Alison holds a PhD from TIA based on her research into farmer decision making behind adoption and implementation of recommended pasture management practices



## PROGRAM FACILITATORS

Steve Willing - Growth in Mind

Interpersonal skills and personal development, including: understanding personality types, working in teams, client skills, facilitation, negotiation, conflict resolution, time management and coaching

Kath Wilson – Wilson Blue

Project management essentials

Cat Nicholls –

Hot Tin Roof Communications

Effective written communication

John Clark - Rural Alive and Well

Mental Health

Extension specialists –

from TIA and the private sector

Extension overview, monitoring and evaluation