

## SAMPLING FOR POMV, TSRV and Tasmanian RLO PCR

### BACKGROUND/ PURPOSE

Pilchard Orthomyxovirus (POMV), Tasmanian salmon aquareovirus (TSRV) and Tasmanian Rickettsia-like organism (RLO) are viral and bacterial pathogens which can cause serious disease in Atlantic salmon. POMV, TSRV and RLO PCR testing is used to detect the genetic material of the virus or bacteria in fish tissues.

### MATERIALS REQUIRED

- An esky with enough ice bricks to maintain samples at 0–4 °C during transport to the Animal Health Laboratory.
- RNAlater - supplied by Animal Health Laboratory. Stable for 1 year.
- Sterile dissection instruments.

### SELECTING ANIMALS FOR TESTING

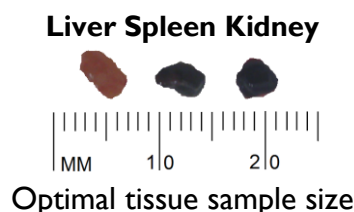
Only moribund fish should be selected for sampling. Samples from dead fish are likely to be degraded.

### NUMBER OF ANIMALS TO BE TESTED

Samples from at least 5 animals should be submitted.

### SAMPLE METHOD

- a) Aseptically dissect a fish to remove the liver, kidney and spleen.
- b) Cut the excised tissues into pieces not more than 5 mm thick.



- c) Place the excised tissues in RNAlater.
- d) The ratio of tissue to RNAlater should not exceed 1:10.
- e) Disinfect instruments between fish with either an alcohol impregnated wipe or an ethanol wash. If safe and practical, heat the instruments over a flame after disinfection.
- f) Do not pool samples from different fish; use one tube of RNAlater for each fish sampled.
- g) Each sample bottle should be clearly labelled with date of collection and fish identification.

### PACKING SUBMISSION

- a) Keep samples chilled on ice after sampling and at all times during transport.
- b) Pack securely in an insulated box with pre-frozen ice bricks.
- c) Dispatch samples as soon as possible to the Animal Health Laboratory.
- d) Submission information should include: submitter identification, reason for submission, type of testing requested.

### TRANSPORTING SAMPLES

Submission time to the laboratory should preferably be within 48 hours. Please do not rely on Australia Post services.

# Sampling for POMV, TSRV and Tasmanian RLO PCR

## SUBMITTING SAMPLES

Submit samples to:

Animal Health Laboratory

DPIPWE

165 Westbury Road

Prospect TAS 7250

E: [specimenreception@dpiipwe.tas.gov.au](mailto:specimenreception@dpiipwe.tas.gov.au)

P: 03 6777 2111

For more information visit the AHL website

[www.dpiipwe.tas.gov.au/AHLabs](http://www.dpiipwe.tas.gov.au/AHLabs)



AHL 165 Westbury Road Prospect TAS 7250

AHL PO Box 46 Kings Meadows TAS 7249

E: [specimenreception@dpiipwe.tas.gov.au](mailto:specimenreception@dpiipwe.tas.gov.au)

P: (03) 6777 2111 F: (03) 6343 3085



**Tasmania**

Explore the possibilities